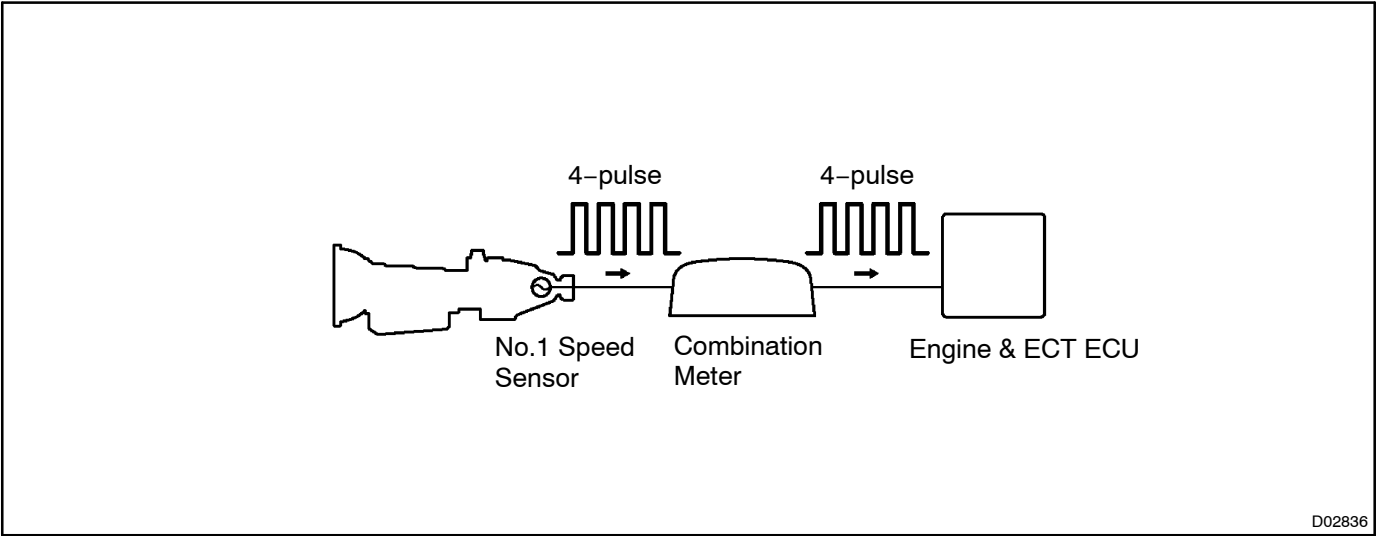


# CIRCUIT INSPECTION

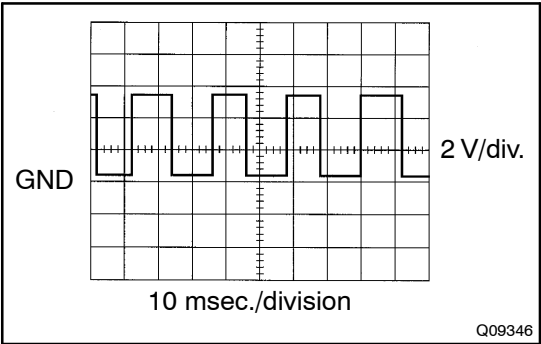
<b>DTC</b>	<b>42</b>	<b>No. 1 Speed Sensor Circuit (Back-up Sensor) Malfunction</b>
------------	-----------	--

## CIRCUIT DESCRIPTION

The No. 1 speed sensor outputs a 4-pulse signal for every revolution of the transmission output shaft. After this signal is converted into a more precise rectangular waveform by the waveform shaping circuit inside the combination meter, it is then transmitted to the Engine & ECT ECU.



DTC No.	DTC Detecting Condition	Trouble Area
42	<p>All conditions below are detected 500 times or more continuously. (2 trip detection logic)</p> <p>(a) No signal from the No. 1 speed sensor is input to the Engine &amp; ECT ECU while 16 pulses of the No. 2 speed sensor signal is sent.</p> <p>(b) Vehicle speed: 9 km/h (5.6 mph) or more for as least 4 seconds.</p> <p>(c) Neutral start switch: OFF (Other than P or N)</p>	<ul style="list-style-type: none"> <li>• Open or short in No. 1 speed sensor circuit</li> <li>• No. 1 speed sensor</li> <li>• Combination meter</li> <li>• Engine &amp; ECT ECU</li> </ul>



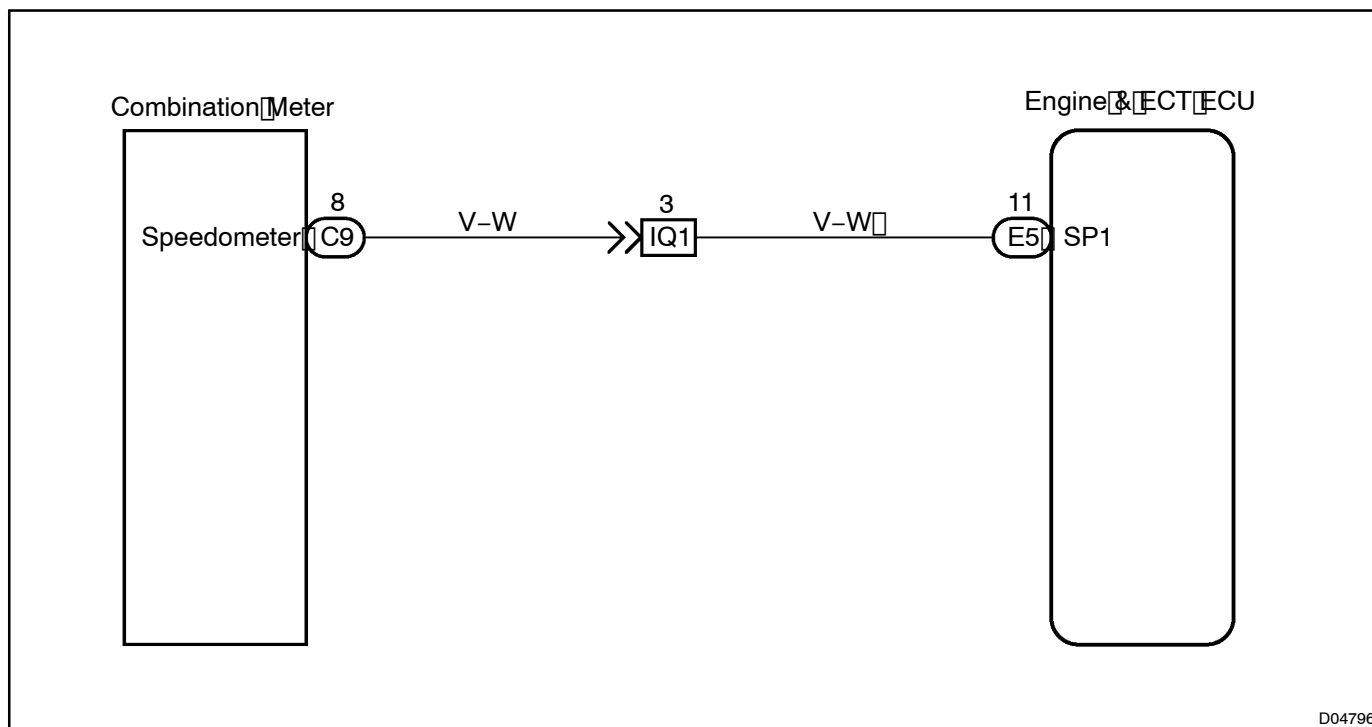
### Reference

Wave from between terminals SPD and E1 when vehicle speed is approx. 60 km/h (37 mph).

### HINT:

The faster the vehicle speed, the greater the number of the No. 1 speed sensor signals produced.

## WIRING DIAGRAM



## INSPECTION PROCEDURE

- 1 Check operation of speedometer.

**CHECK:**

Drive the vehicle and check if the operation of the speedometer in the combination meter is normal.

**HINT:**

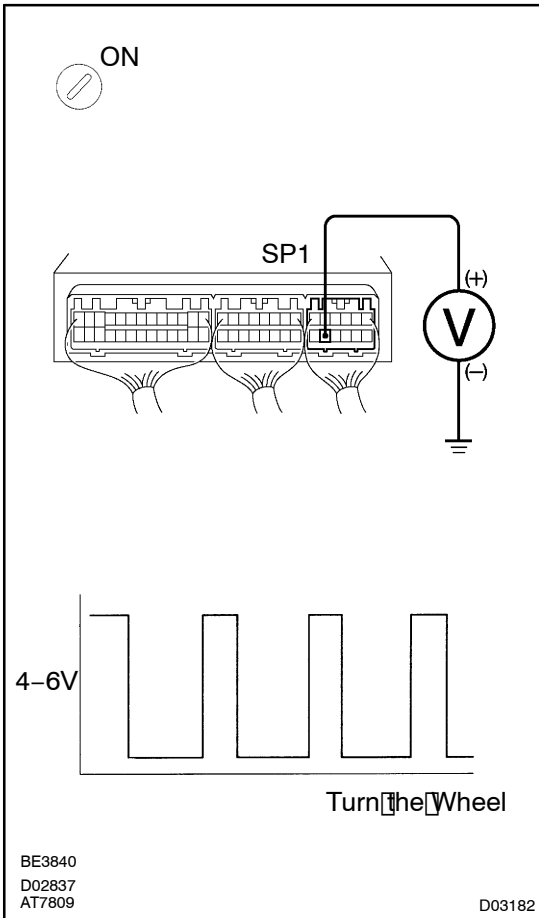
The No. 1 speed sensor is operating normally if the speedometer display is normal.

NG

Check the speedometer circuit (See page [BE-20](#)).

OK

## 2 Check voltage between terminal SPD of Engine & ECT ECU connector and body ground.



### PREPARATION:

- (a) Shift the shift lever to neutral.
- (b) Jack up rear wheels on one side.
- (c) Turn ignition switch ON.

### CHECK:

Measure voltage between terminal SP1 of Engine & ECT ECU connector and body ground when the wheel is turned slowly.

### OK:

Voltage is generated intermittently.

NG

Check and repair the harness and connector between combination meter and Engine & ECT ECU (See page N-30).

OK

Check and replace the Engine & ECT ECU (See page N-30).